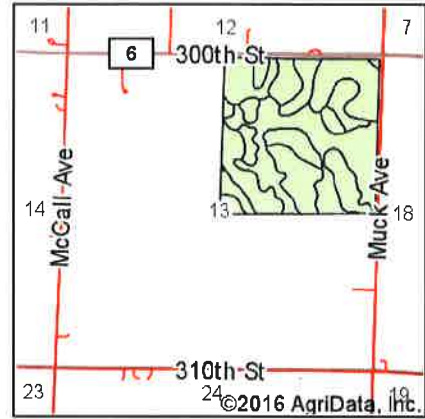
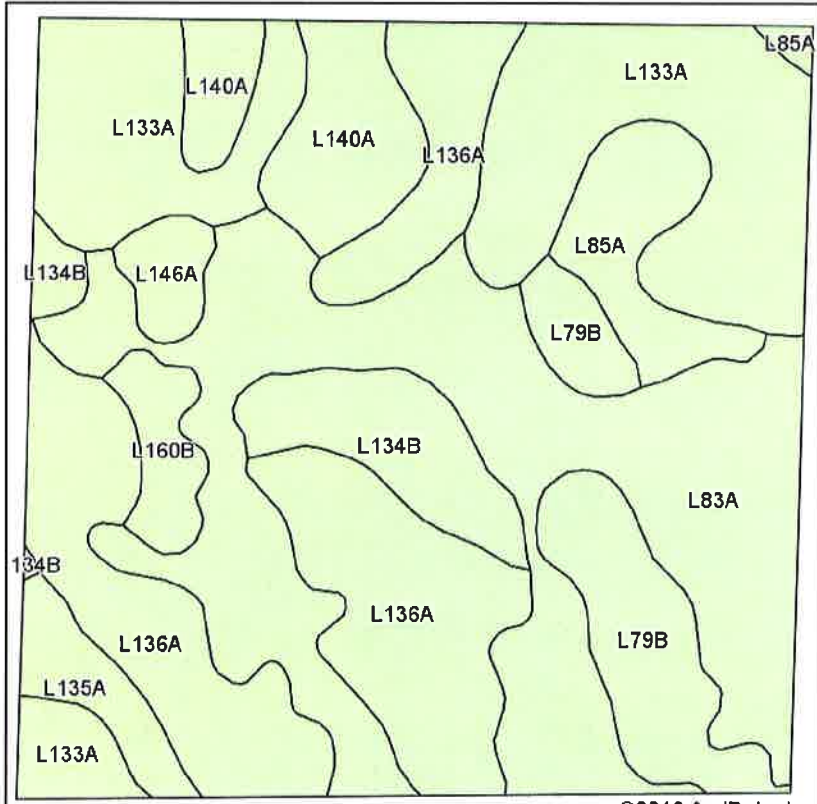


Soils Map



State: **Minnesota**
 County: **Nobles**
 Location: **13-101N-41W**
 Township: **Ransom**
 Acres: **155.58**
 Date: **4/15/2016**



Maps Provided By:



Soils data provided by USDA and NRCS.

©2016 AgriData, Inc.

Area Symbol: MN105, Soil Area Version: 13

Code	Soil Description	Acres	Percent of field	Non-Irr Class *c	Productivity Index	Bromegrass alfalfa hay	Corn	Oats	Soybeans	Spring wheat
L83A	Webster clay loam, 0 to 2 percent slopes	45.47	29.2%	IIw	93					
L136A	Crooksford silty clay loam, 1 to 3 percent slopes	32.94	21.2%	Ie	100	5.2	184	90	55	64
L133A	Waldorf silty clay loam, 0 to 2 percent slopes	31.81	20.4%	IIw	85					
L79B	Clarion loam, 2 to 6 percent slopes	11.29	7.3%	IIe	*m 95					
L140A	Ocheda silty clay loam, 1 to 3 percent slopes	9.25	5.9%	Iw	97	5.2	178	90	53	64
L134B	Clarion-Crooksford complex, 1 to 5 percent slopes	8.30	5.3%	IIe	95	5	175	88	52	62
L85A	Nicollet clay loam, 1 to 3 percent slopes	7.13	4.6%	Iw	*m 99					
L135A	Okabena silty clay loam, 1 to 3 percent slopes	3.73	2.4%	Iw	100		184		55	
L160B	Dickinson sandy loam, loamy substratum, 1 to 6 percent slopes	3.28	2.1%	IIIe	67		123		37	
L146A	Glencoe silty clay loam, 0 to 1 percent slopes	2.38	1.5%	IIIw	*m 86					
Weighted Average					*m 93.1	1.7	65.9	29.1	19.7	20.7

*m: Productivity index updated on 3/14/2016

*c: Using Capabilities Class Dominant Condition Aggregation Method

Soils data provided by USDA and NRCS.